



Title Plan - LT 584763

Survey Number LT 584763
Surveyor Reference 222109 (SS) Potiki Complete Units
Surveyor George Steven Sharp
Survey Firm A I Bates and Associates (2004) Ltd (Auckland)
Surveyor Declaration

Survey Details

Dataset Description Complete Stage Plan of Units on Lot 48 DP 44713 and Lot 49 DP 44712
Status Initiated
Land District North Auckland
Submitted Date
Survey Class Class A
Survey Approval Date
Deposit Date

Territorial Authorities

Auckland Council

Comprised In

RT NA1962/4
RT NA2075/99

Created Parcels

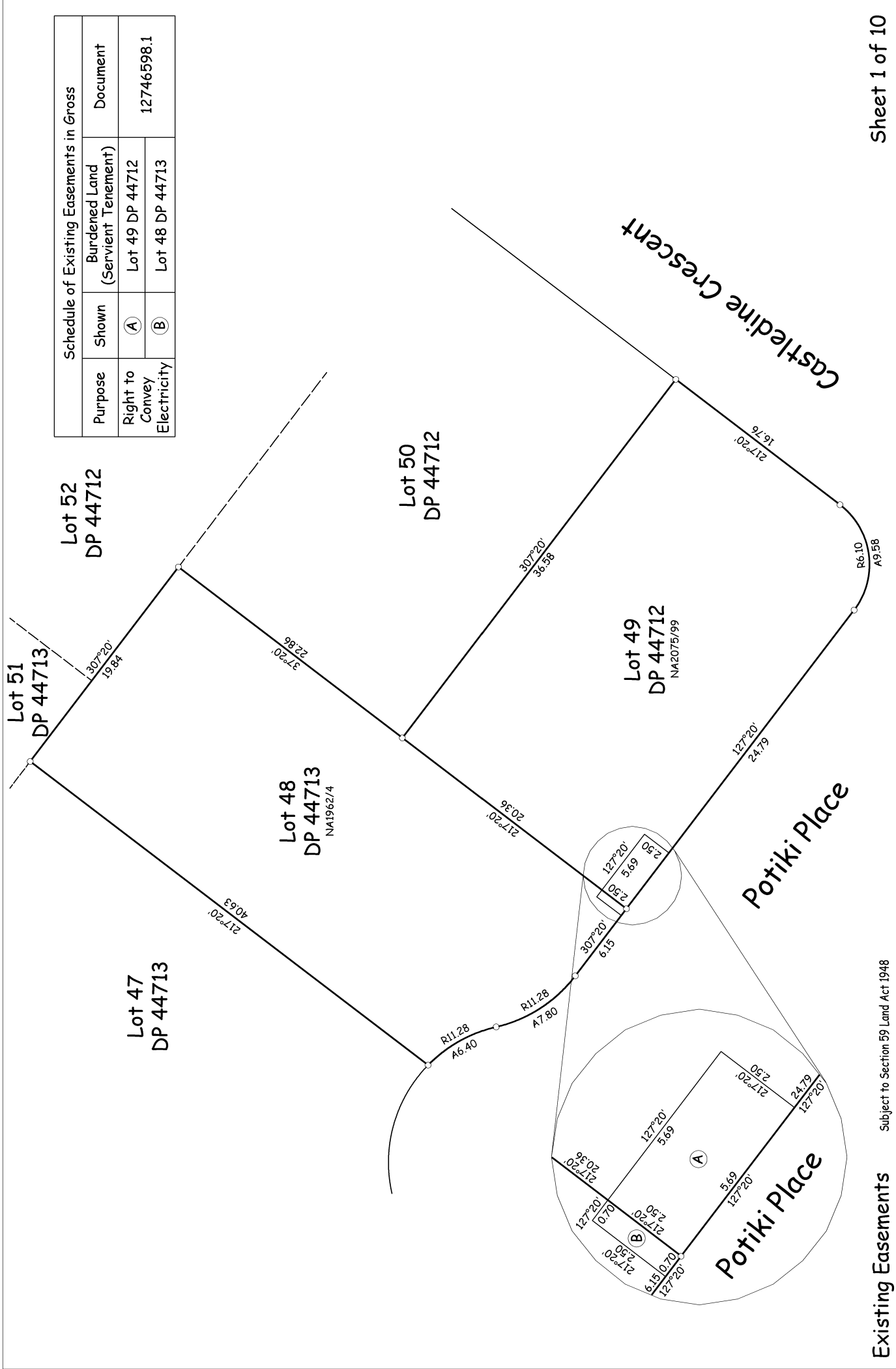
Parcels	Parcel Intent	Area	RT Reference
Principal Unit 25 Deposited Plan 584763	Principal Unit		1100945
Principal Unit 26 Deposited Plan 584763	Principal Unit		1100946
Principal Unit 27 Deposited Plan 584763	Principal Unit		1100947
Principal Unit 28 Deposited Plan 584763	Principal Unit		1100948
Principal Unit 29 Deposited Plan 584763	Principal Unit		1100949
Principal Unit 30 Deposited Plan 584763	Principal Unit		1100950
Principal Unit 31 Deposited Plan 584763	Principal Unit		1100951
Principal Unit 32 Deposited Plan 584763	Principal Unit		1100952
Principal Unit 35 Deposited Plan 584763	Principal Unit		1100955
Principal Unit 33 Deposited Plan 584763	Principal Unit		1100953
Principal Unit 34 Deposited Plan 584763	Principal Unit		1100954
Principal Unit 36 Deposited Plan 584763	Principal Unit		1100956
Principal Unit 37 Deposited Plan 584763	Principal Unit		1100957
Principal Unit 38 Deposited Plan 584763	Principal Unit		1100958
Principal Unit 39 Deposited Plan 584763	Principal Unit		1100959
Principal Unit 40 Deposited Plan 584763	Principal Unit		1100960
Principal Unit 41 Deposited Plan 584763	Principal Unit		1100961
Principal Unit 42 Deposited Plan 584763	Principal Unit		1100962
Principal Unit 43 Deposited Plan 584763	Principal Unit		1100963
Accessory Unit 1P Deposited Plan 584763	Accessory Unit		1100963
Accessory Unit 2P Deposited Plan 584763	Accessory Unit		1100963
Accessory Unit 3P Deposited Plan 584763	Accessory Unit		1100946
Accessory Unit 4P Deposited Plan 584763	Accessory Unit		1100961



Title Plan - LT 584763

Created Parcels

Parcels	Parcel Intent	Area	RT Reference
Accessory Unit 5P Deposited Plan 584763	Accessory Unit		1100951
Accessory Unit 6P Deposited Plan 584763	Accessory Unit		1100958
Accessory Unit 7P Deposited Plan 584763	Accessory Unit		1100934
Accessory Unit 8P Deposited Plan 584763	Accessory Unit		1100953
Accessory Unit 9P Deposited Plan 584763	Accessory Unit		1100941
Accessory Unit 10P Deposited Plan 584763	Accessory Unit		1100960
Accessory Unit 11P Deposited Plan 584763	Accessory Unit		1100929
Accessory Unit 12P Deposited Plan 584763	Accessory Unit		1100933
Accessory Unit 16P Deposited Plan 584763	Accessory Unit		1100955
Accessory Unit 13P Deposited Plan 584763	Accessory Unit		1100942
Accessory Unit 14P Deposited Plan 584763	Accessory Unit		1100954
Accessory Unit 15P Deposited Plan 584763	Accessory Unit		1100927
Accessory Unit 27G Deposited Plan 584763	Accessory Unit		1100947
Accessory Unit 28G Deposited Plan 584763	Accessory Unit		1100948
Accessory Unit 30G Deposited Plan 584763	Accessory Unit		1100950
Accessory Unit 25C Deposited Plan 584763	Accessory Unit		Multiple
Accessory Unit 31C Deposited Plan 584763	Accessory Unit		Multiple
Accessory Unit 37C Deposited Plan 584763	Accessory Unit		Multiple
Accessory Unit 29G Deposited Plan 584763	Accessory Unit		1100949
Total Area		<hr/> 0.0000 Ha	

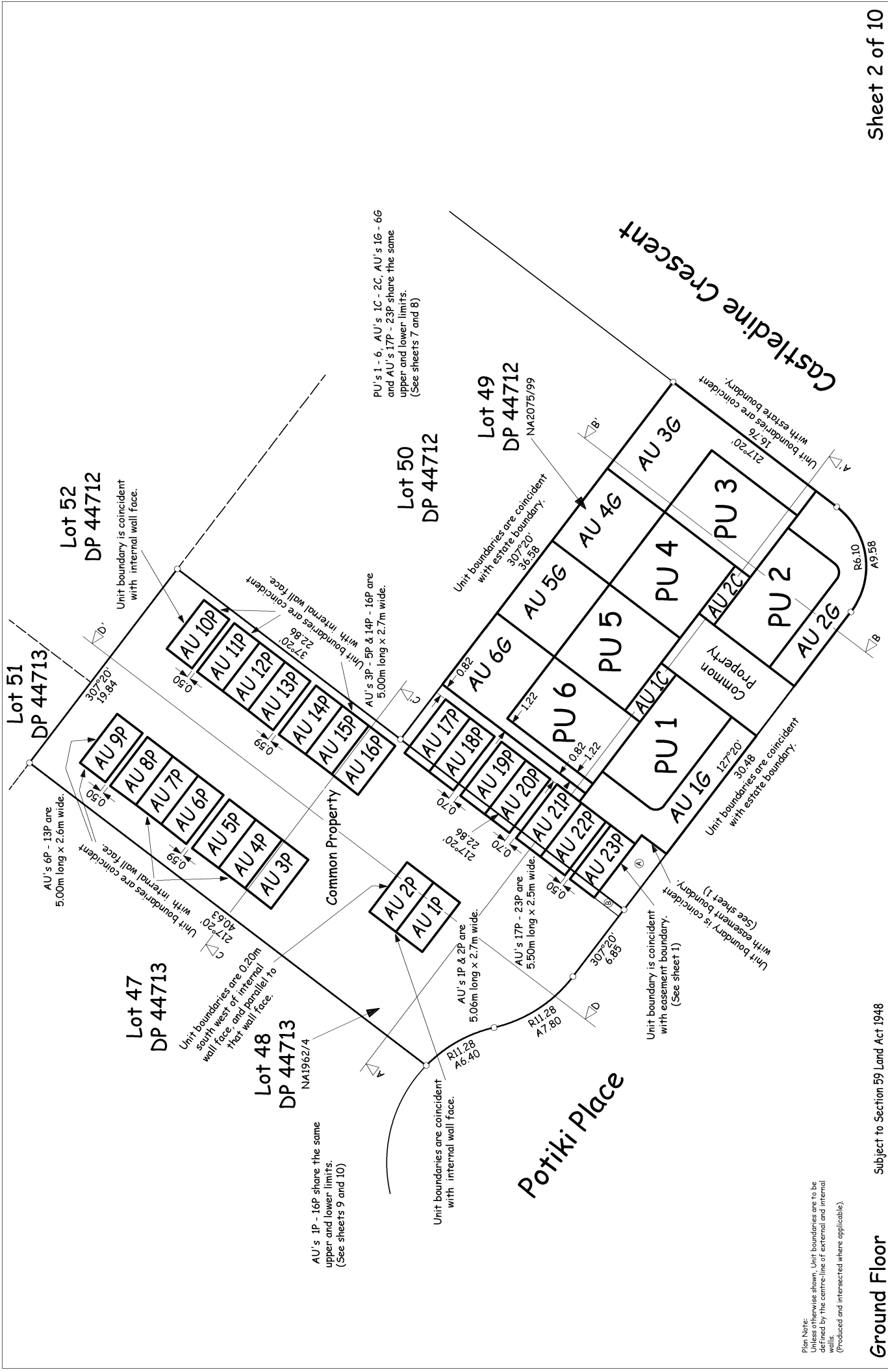


Schedule of Existing Easements in Gross			
Purpose	Shown	Burdened Land (Servient Tenement)	Document
Right to Convey Electricity	(A)	Lot 49 DP 44712	12746598.1
	(B)	Lot 48 DP 44713	

Sheet 1 of 10

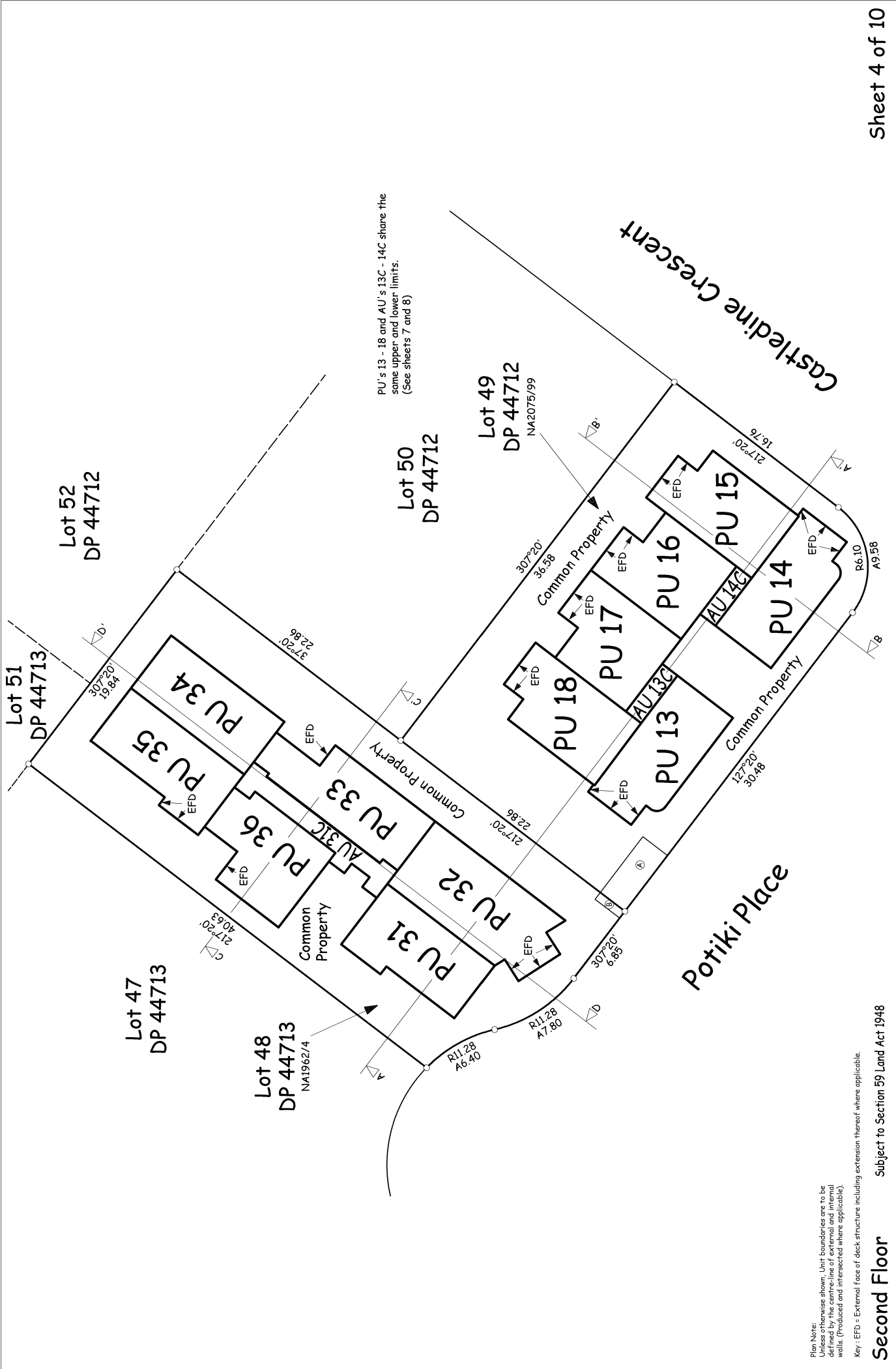
Existing Easements Subject to Section 59 Land Act 1948

LAND DISTRICT: North Auckland	A I Bates & Associates Ltd Surveyor: Brendan John Bates Date: August 2024	DP 584763
TERRITORIAL AUTHORITY: Auckland City		
Complete Stage Plan of Units on Lot 48 DP 44713 and Lot 49 DP 44712		
Scale: 1:200	Date: August 2024	



Plan Note:
 Unless otherwise shown, Unit boundaries are to be defined by the centre-line of external and internal walls.
 (Produced and intersected where applicable).

<p>LAND DISTRICT: North Auckland</p> <p>TERRITORIAL AUTHORITY: Auckland City</p>	<p>Complete Stage Plan of Units on Lot 48 DP 44713 and Lot 49 DP 44712</p>	<p>Surveyed by: A I Bates & Associates Ltd Surveyor: Brendan John Bates Date: August 2024</p> <p>Scale: 1:200</p>
<p>DP 584763</p>		



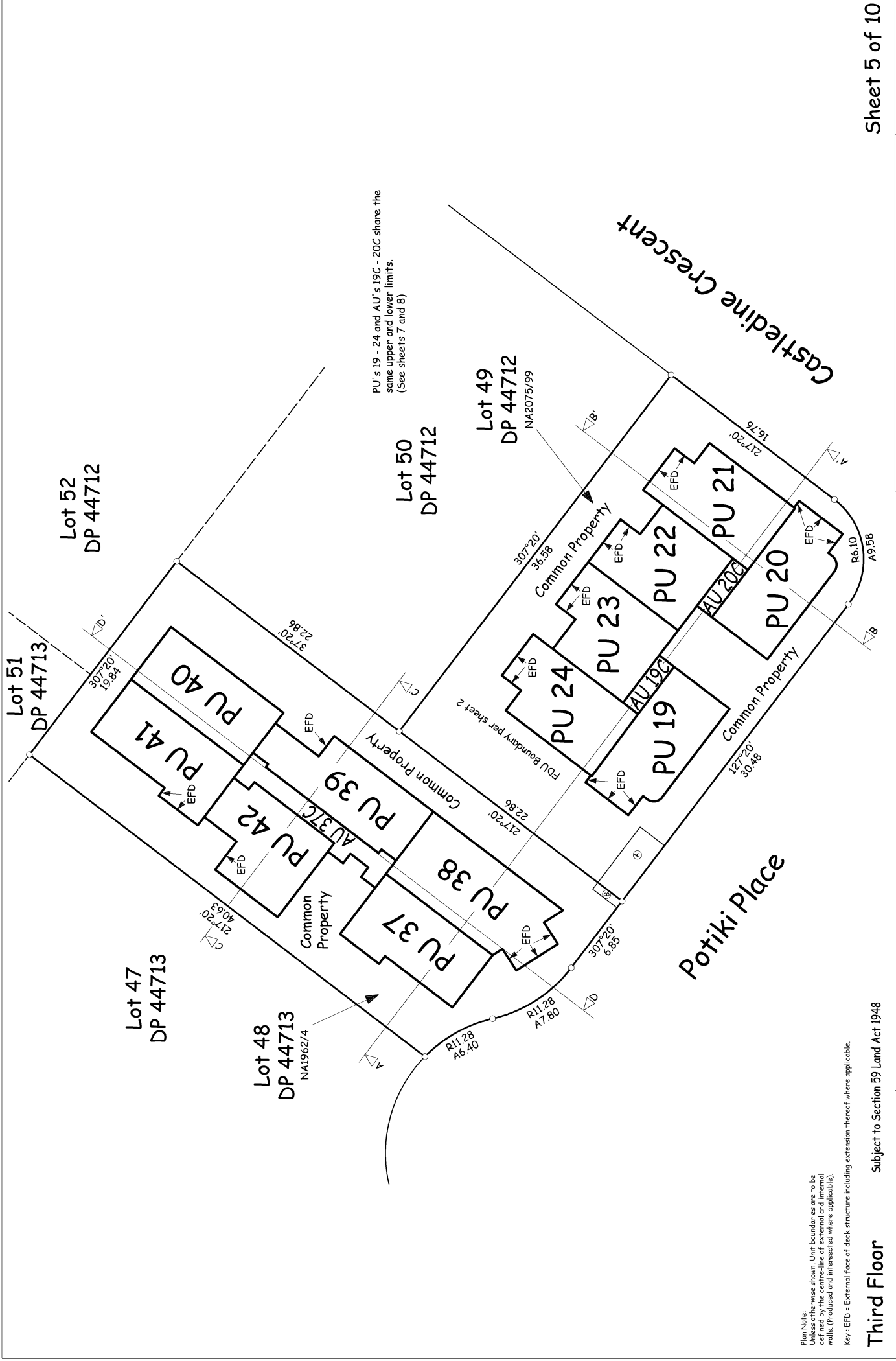
Plan Note:
 Unless otherwise shown, Unit boundaries are to be defined by the centre-line of external and internal walls. (Produced and intersected where applicable).
 Key: EFD = External face of deck structure including extension thereof where applicable.

PU's 13 - 18 and AU's 13C - 14C share the same upper and lower limits. (See sheets 7 and 8)

Second Floor Subject to Section 59 Land Act 1948

Sheet 4 of 10

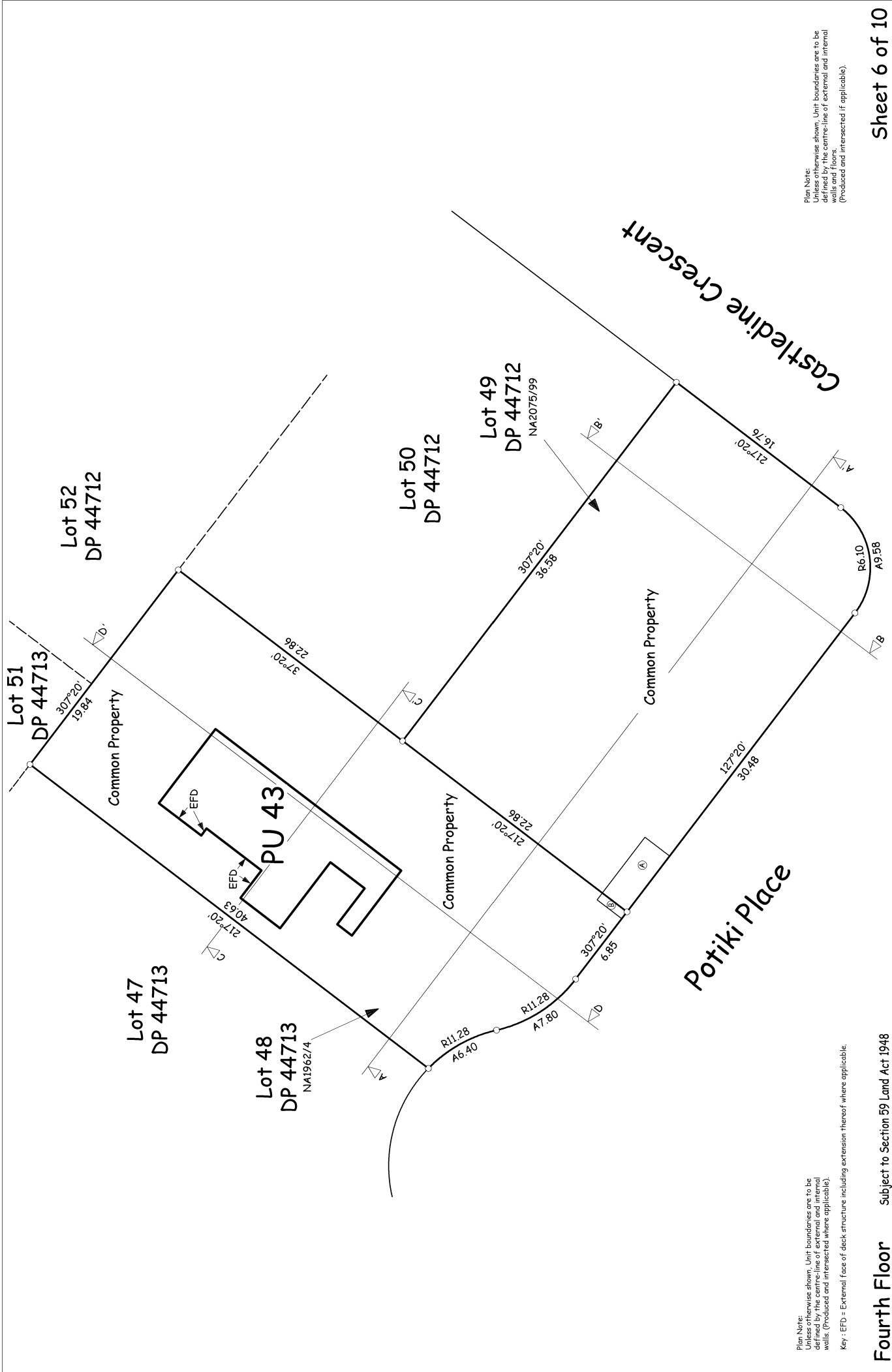
LAND DISTRICT: North Auckland TERRITORIAL AUTHORITY: Auckland City	Complete Stage Plan of Units on Lot 48 DP 44713 and Lot 49 DP 44712	Surveyed by: A I Bates & Associates Ltd Surveyor: Brendan John Bates Date: August 2024	DP 584763
Second Floor	Subject to Section 59 Land Act 1948	Scale: 1:200	Date: August 2024



Plan Note:
 Unless otherwise shown, Unit boundaries are to be defined by the centre-line of external and internal walls. (Produced and dimensioned where applicable).
 Key: EFD = External face of deck structure including extension thereof where applicable.

Third Floor Subject to Section 59 Land Act 1948

LAND DISTRICT: TERRITORIAL AUTHORITY:	North Auckland Auckland City	Complete Stage Plan of Units on Lot 48 DP 44713 and Lot 49 DP 44712	Surveyed by: A I Bates & Associates Ltd Surveyor: Brendan John Bates	Scale: 1:200	Date: August 2024
	DP 584763				



Plan Note:
 Unless otherwise shown, Unit boundaries are to be defined by the centre-line of external and internal walls. (Produced and interscribed where applicable).
 Key: EFD = External face of deck structure including extension thereof where applicable.

Plan Note:
 Unless otherwise shown, Unit boundaries are to be defined by the centre-line of external and internal walls and floors. (Produced and interscribed if applicable).

Fourth Floor

Subject to Section 59 Land Act 1948

Sheet 6 of 10

LAND DISTRICT: North Auckland
 TERRITORIAL AUTHORITY: Auckland City

Complete Stage Plan of Units
 on Lot 48 DP 44713 and Lot 49 DP 44712

Surveyed by: A I Bates & Associates Ltd
 Surveyor: Brendan John Bates
 Scale: 1:200
 Date: August 2024

DP 584763

Castledine Crescent

Common Property

Lot 49
DP 44712
NA2075/99

Unit boundaries are 4.50m above the upper surface of PU 21 floor level.

Unit boundaries are 3.50m above the upper surface of PU 38 floor level.

Common Property

Lot 48
DP 44713
NA1962/4

Unit boundaries are 0.20m below upper surface of PU 38 floor level.

Unit boundaries are 0.20m below upper surface of PU 32 floor level.

Unit boundaries are 0.20m below upper surface of PU 26 floor level.

Common Property

Carpark floor level

Upper and lower limits of AU 21P also apply to AU's 17P - 22P and AU's 22P - 23P

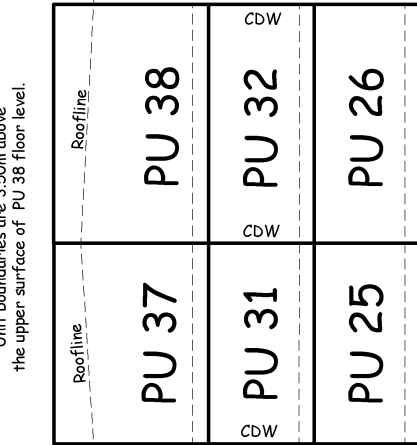
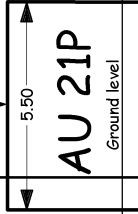
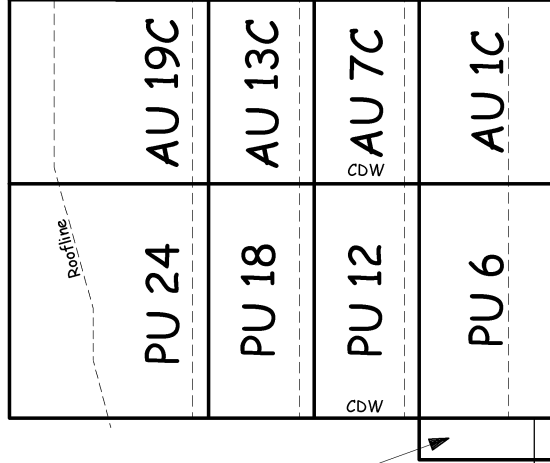
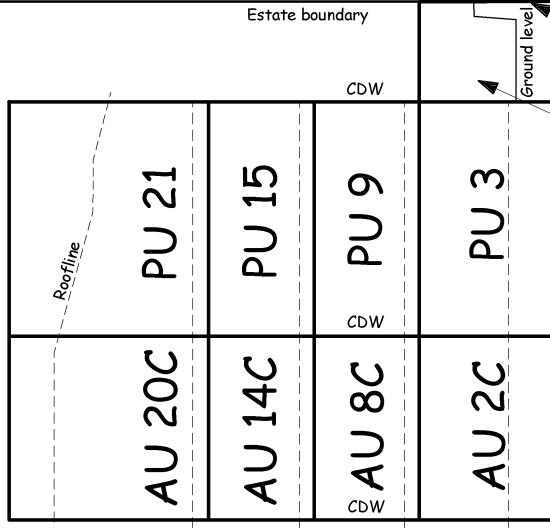
Unit boundary is 1.00m below upper surface of PU 3 floor level.

Unit boundary is 0.20m below upper surface of PU 9 floor level.

Unit boundaries are 1.00m below upper surface of PU 3 floor level.

Unit boundaries are 1.00m below upper surface of PU 3 floor level.

Unit boundary is coincident with estate boundary.



Note:
Upper surface of unit floor levels and roof line shown ticked.
CDW = Centreline of wall including extension thereof where appropriate.

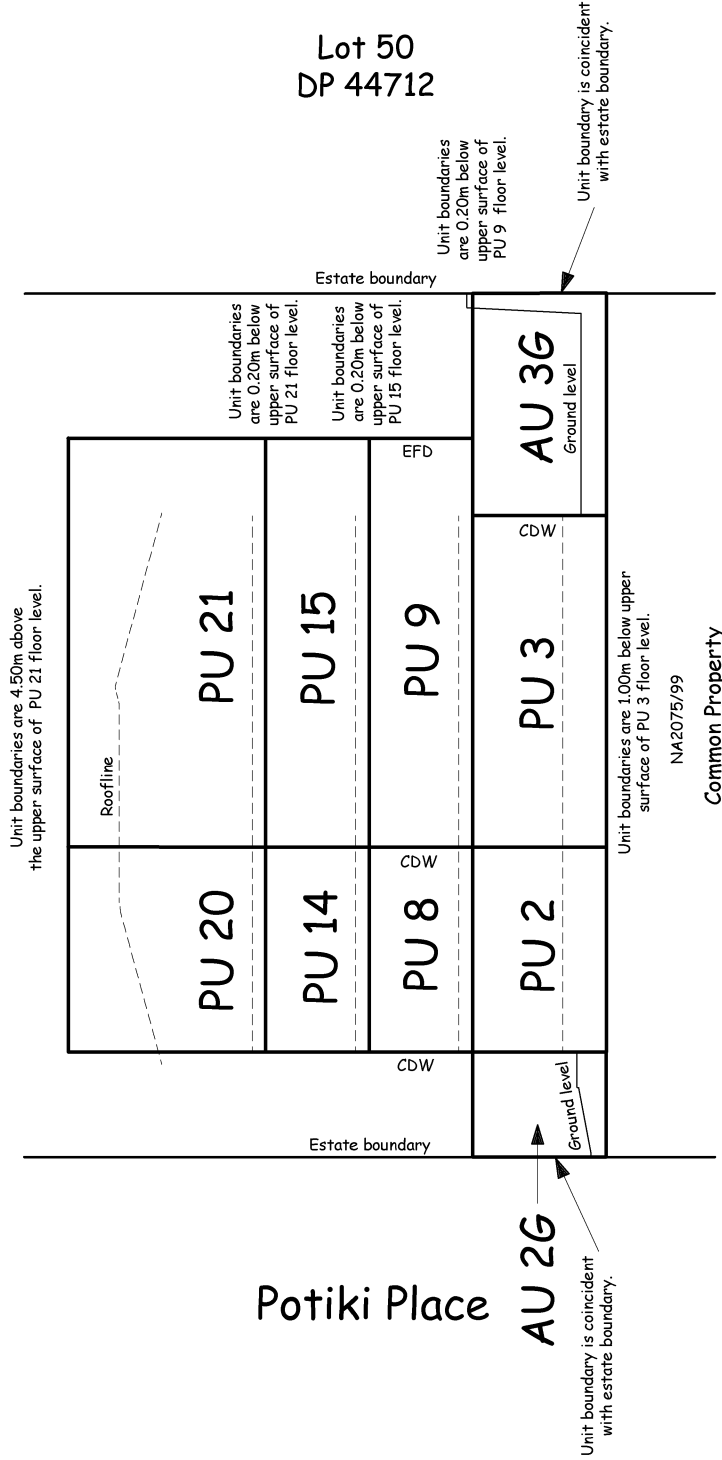
Complete Stage Plan of Units
on Lot 48 DP 44713 and Lot 49 DP 44712

LAND DISTRICT: North Auckland
TERRITORIAL AUTHORITY: Auckland City

Surveyed by: A I Bates & Associates Ltd
Surveyor: Brendan John Bates
Scale: 1:100 Date: August 2024

Common Property

Lot 49
DP 44712
NA2075/99



Potiki Place

Note:
1. All surfaces of unit floor levels and roof line shown packed.
2. All surfaces of walls including external walls shown.
3. CDW = Common Driveway
4. EFD = External face of deck structure including extension thereof where applicable.

Section B - B'

Subject to Section 59 Land Act 1948

LAND DISTRICT: North Auckland

TERRITORIAL AUTHORITY: Auckland City

Complete Stage Plan of Units
on Lot 48 DP 44713 and Lot 49 DP 44712

Surveyed by: A I Bates & Associates Ltd

Surveyor: Brendan John Bates

Date: August 2024

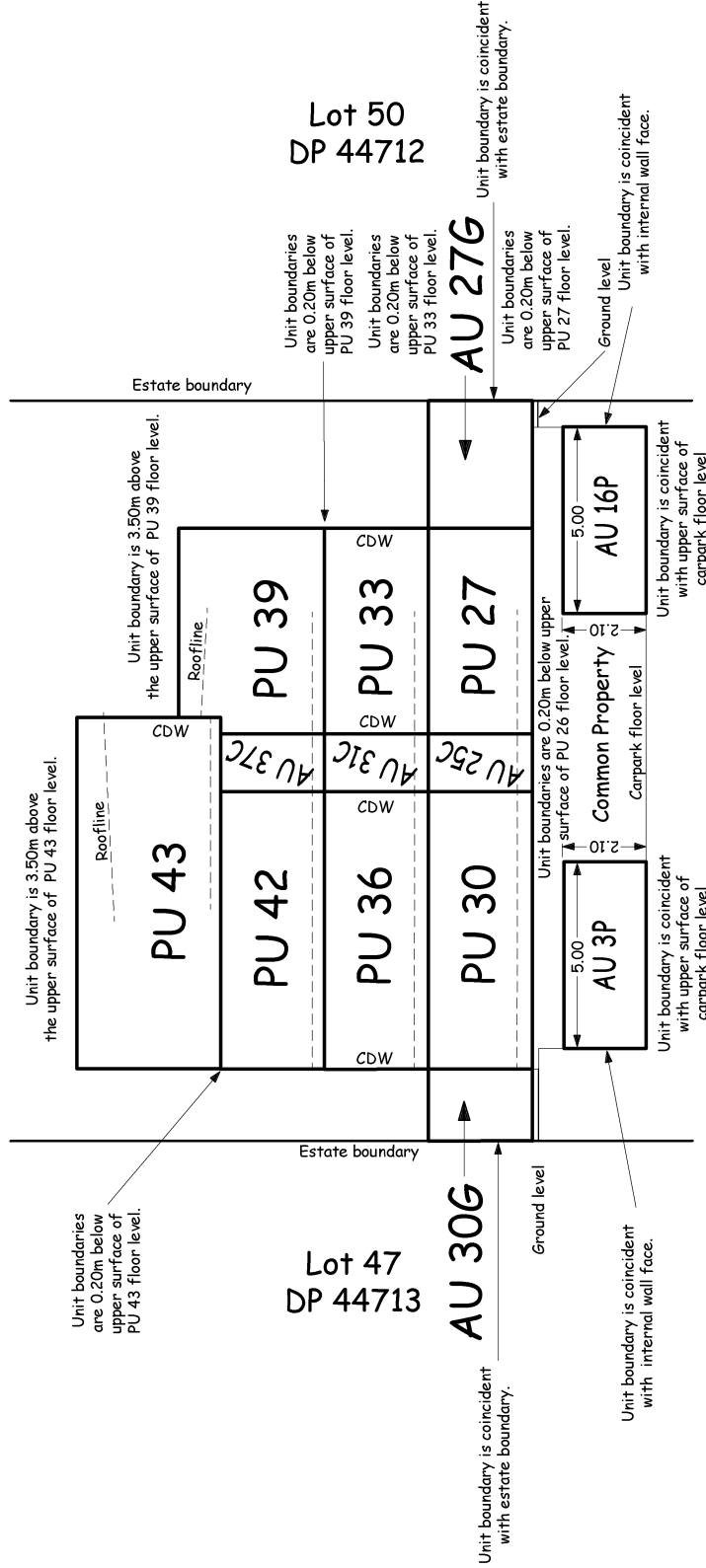
Scale: 1:100

Sheet 8 of 10

DP 584763

Common Property
 Lot 48
 DP 44713

NA1962/4



Plan Note:
 Unit boundaries shown. Unit boundaries are to be defined by the centre-line of external and internal walls and floors.
 (Produced and intersected if applicable).

Note:
 Upper surface of unit floor levels and roof line shown packed.
 CDW = Centreline of wall including extension thereof where appropriate.

Section C - C' Subject to Section 59 Land Act 1948

LAND DISTRICT: North Auckland
 TERRITORIAL AUTHORITY: Auckland City

Complete Stage Plan of Units
 on Lot 48 DP 44713 and Lot 49 DP 44712

Surveyed by: AI Bates & Associates Ltd

Surveyor: Brendan John Bates

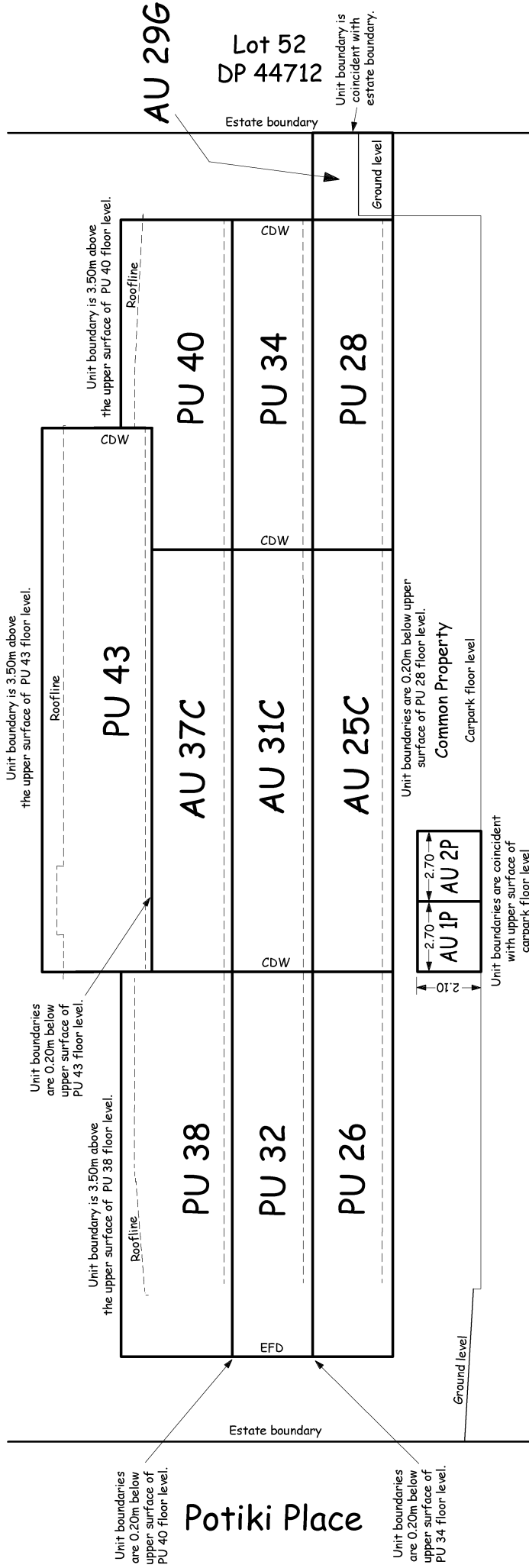
Date: August 2024

Scale: 1:100

Common Property

Lot 48
DP 44713

NA1962/4



AU 29G

Lot 52
DP 44712

Estate boundary

Unit boundary is coincident with estate boundary.

Ground level

Unit boundary is 3.50m above the upper surface of PU 40 floor level.

Roofline

CDW

Roofline

Unit boundary is 3.50m above the upper surface of PU 43 floor level.

Unit boundaries are 0.20m below upper surface of PU 43 floor level.

Unit boundary is 3.50m above the upper surface of PU 38 floor level.

Roofline

Estate boundary

Unit boundaries are 0.20m below upper surface of PU 28 floor level.

Common Property

Carpark floor level

Unit boundaries are coincident with upper surface of carpark floor level.

Ground level

Unit boundaries are 0.20m below upper surface of PU 40 floor level.

Potiki Place

Unit boundaries are 0.20m below upper surface of PU 34 floor level.

Plan Note:
Unless otherwise shown, Unit boundaries are to be defined by the centre-line of external and internal walls and floors.
(Produced and intersected if applicable).

Note:
Upper surfaces of unit floor levels and roof line shown picked.
CDW = Centreline of wall including extension thereof where appropriate.

Section D - D' Subject to Section 59 Land Act 1948

Sheet 10 of 10

LAND DISTRICT: North Auckland
TERRITORIAL AUTHORITY: Auckland City

Complete Stage Plan of Units
on Lot 48 DP 44713 and Lot 49 DP 44712

Surveyed by: A I Bates & Associates Ltd
Surveyor: Brendan John Bates
Scale: 1:100 Date: August 2024

DP 584763

Schedule / Memorandum

Land Registration District

North Auckland

Plan Number

DP 584763

Territorial Authority (the Council)

Auckland

Schedule of Easements in Gross			
Purpose	Shown	Burdened Land (Servient Tenement)	Grantee
Right to convey Telecommunications.	Common Property DP 584763	Common Property DP 584763	Chorus New Zealand Limited