

---

# POTIKI APARTMENTS

---

## 101/3 POTIKI PLACE

---

2 BEDROOMS  
1 BATHROOM

---

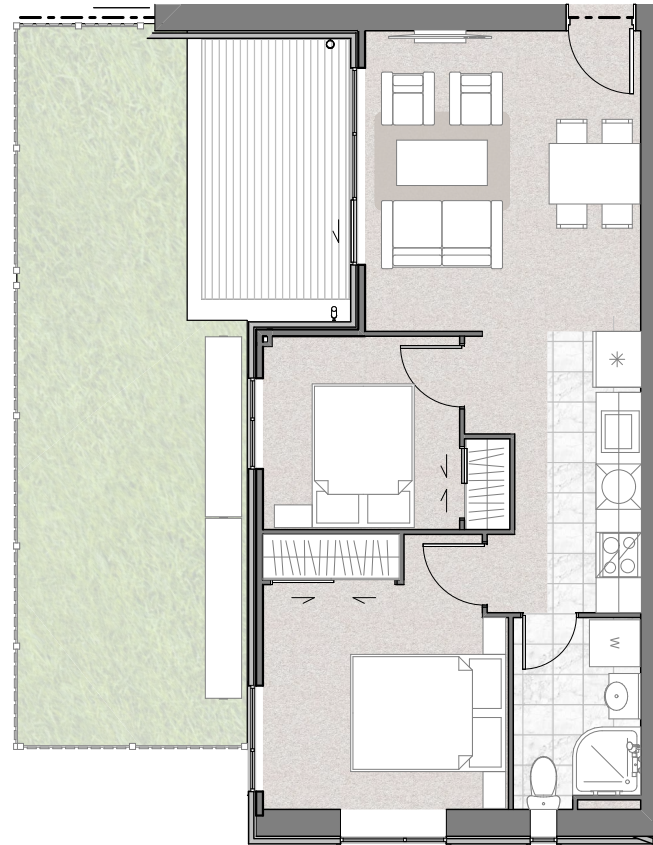
GROSS FLOOR AREA	:	53M <sup>2</sup>
DECK AREA	:	7M <sup>2</sup>
TOTAL AREA	:	85M <sup>2</sup>

### DISCLAIMER:

All plans have been prepared prior to the completion of construction of the development. Whilst every effort has been made to ensure the information are correctly presented, they can only be used as guidance and no responsibility will be taken for any differences, changes or errors or omissions which may become apparent whether before or after completion of development. The information is subject to changes and sales contracts. It will be superseded by such information contained in any such contracts in respect of the subject development.

### GFA:

Gross Floor Area is measured from the outside face of the exterior walls and to the centreline of and intertenacy or common area interior wall.



101/3 POTIKI PLACE

